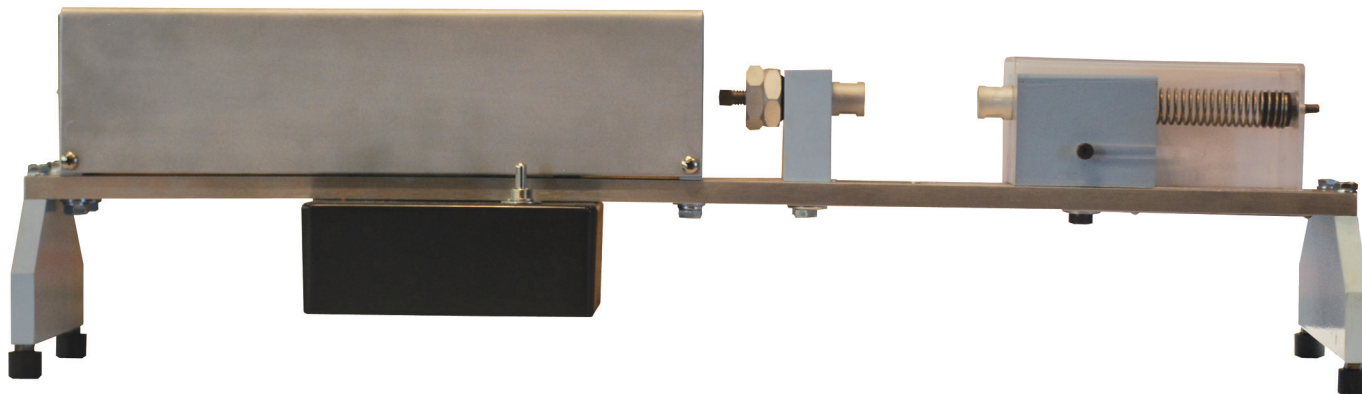


SAMPLE CRACKER

Model Number: ME-SOLC-3



PRODUCT DESCRIPTION

The sample cracker was designed to crack one nut at a time for the purpose of determining the kernel to shell ratio in a sample of in-shell pecans. The sample cracker is constructed of heavy duty long lasting components. When correctly set, the sample cracker will shatter the shell without damaging much if any of the kernel. This will allow for easy measurement of the kernel and shell weight. Shell and kernel are captured and allowed to fall onto the table or tray positioned beneath the cracker.

SPECIFICATIONS

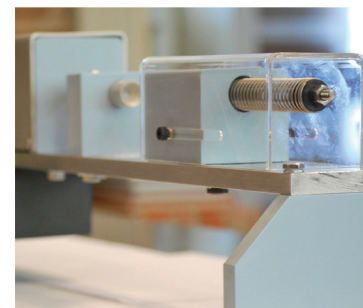
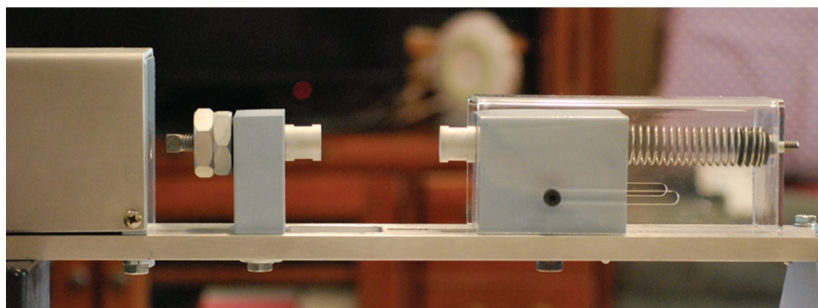
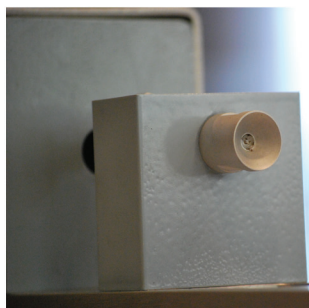
Capacity: One nut at a time. (manual feed)

Estimated Crated Weight: 22 lbs

Dimensions: Approximately 6-1/2" Width x 29" Length x 8" Height

FEATURES

- Durable commercial design and construction
- Easy to use
- Adjusts to all sizes of nuts
- Integral crack adjustment



modern electronics & equipment, inc.

LOCATION
Mansfield, Louisiana

CONTACT
318-872-4764

WEBSITE
www.me-equip.com